

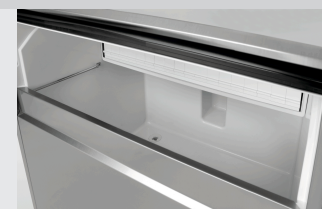


- ▶ Ice-cube design: Conical (full cone)
- ✓ Ice-cube size: 35 x 32 mm, 20 g



- ▶ Max. production: 86 kg / 24 hrs
- ▶ Production/cycle: 56 ice-cubes

- ▶ Storage tank capacity: 42 kg / 2100 ice-cubes



- ▶ Can be fitted below the counter



More efficient and economical – the optimised ice-cube maker series B Plus supplies fully conical ice-cubes in high production quantities and is also very economical.

- | | | | |
|------------------------------------|--------------------------------------|--|---------------------------------------|
| • Height-adjustable feet: | No | • Material: | Galvanised |
| • Height without feet: | 910 mm | • Important information: | Clearance to all sides at least 15 cm |
| • Water outlet: | Ø 20 mm | • Coolant: | R290 / 0,090 kg |
| • Design ice cube: | Tapered form (full taper) | • Estimated delivery time from our warehouse in Salzkotten, Germany is week: | 05 / 2022 |
| • Ice cube size: | 35 x 32 mm, 20 g | • Size: | W 583 x D 700 x H 900 mm |
| • Production / work step: | 56 Ice cubes | • Weight: | 54.2 kg |
| • Number of ice cube sizes: | 1 | | |
| • Power load: | 0,98 kW 230 V 50 Hz | | |
| • Properties: | Cleaning function | | |
| | Water consumption / hour: 9.1 litres | | |
| • Control lamp: | ON/OFF | | |
| • ON/OFF switch: | Yes | | |
| • Control unit: | Electronic | | |
| • Can be fitted below the counter: | Yes | | |
| • Can be installed: | No | | |
| • Water connection: | 3/4" | | |
| • Climate class: | T | | |
| • Cooling: | Air cooled | | |
| • Filling level sensor: | Yes | | |
| • Storage container capacity: | 42 kg | | |
| • Production max.: | 86 kg / 24 h | | |
| • Production by means of: | Spray system | | |
| • Colour: | Silver | | |
| • Including: | 1 ice shovel | | |
| • Material: | Stainless steel | | |
| | Plastic | | |
| | Steel | | |

Ice-cube maker B 86 Plus

Add on Products

Stainl.steel polish.spray 500ml can



- Content / can: 500 ml
- Application: Remove heavy soiling such as grease residue first
Do not spray onto hot surfaces
- allow them to cool down first:
- Application: Before use, bring the can to room temperature and shake well
Spray sparingly onto the surfaces to be cleaned

Rub evenly over the entire surface
Polish with a dry cloth

Code-No. 173031
GTIN 4015613360195

Ice Crusher, stainless steel



- Colour: Silver
- Power load: 0,06 kW | 230 V | 50 Hz
- Production max.: 60 kg / h
- Material: Stainless steel
- Important information: -
- ON/OFF switch: No
- Safety switch: 2
- Storage capacity collection tray: 1 kg
- Model: With collection tray
- Properties ice tray: With lid
- Properties: Collection tray can be removed

Code-No. 135012
GTIN 4015613479118

Partial desalination system TKD 13400 FB



- Desalination type: Partial desalination
- Sampling tap: Yes
- Water connection: 3/4"
- Colour: Blue
- Connection capacity: 1 unit
- Output capacity: 13,400 litres / cartridge at 10° d (carbonate hardness)
- Material: Plastic
Glass-fibre reinforced
- Important information: -
- Deposit per cartridge: 290 €

Code-No. 109878
GTIN 4015613681597