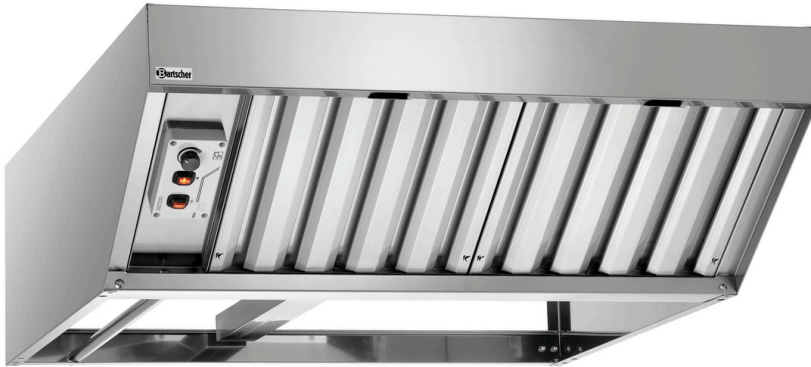


- ▶ Motor power: 800 m³ - 1500 m³
- ▶ Number of filters: 2

- ▶ Fan control
 - ✓ Manual
 - ✓ Continuous
 - ✓ Knob



- ON/OFF switch: Yes
- Motor Power: 800 m³/h to 1500 m³/h
- Fan regulation: Manual
Stepless
Toggle
- Number of fan motors/
exhaust air outputs: 1
- Assembly type: Top of appliance
- Flame protection filter: -
- Number of filters: 2
- Lighting: -
- Lamps (number +
watt): -
- Available on request: -
- Power load: 0,37 kW | 230 V | 50/60 Hz
- Material: Stainless steel
- Important information: -
- Material filter: Stainless steel
- Properties: -
- Including: Connection material
Attachment material
- Size: W 870 x D 950 x H 300 mm
- Weight: 31.6 kg