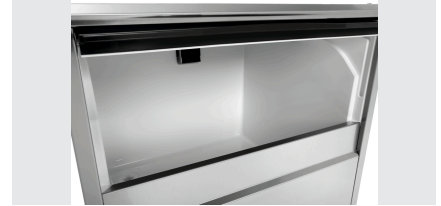




- ▶ Ice flake production: 130 kg / 24 hours
- ▶ Storage tank: 18 kg



The high-performance ice flake maker is ideal for presenting food on fresh food counters or buffets.

- Water outlet: Ø 20 mm
- Power load: 0,49 kW | 230 V | 50 Hz
- Properties: -
- Control lamp: yes
- ON/OFF switch: Yes
- Can be fitted below the counter: Yes
- Can be installed: Yes
- Water connection: 3/4"
- Climate class: T
- Coolant: R290 / 0,070 kg
- Cooling: Air cooled
- Filling level sensor: Yes
- Storage container capacity: 18 kg
- Production max.: 130 kg / 24 h
- Including: 1 ice shovel
- Important information: Clearance to all sides at least 15 cm
- Height-adjustable feet: Yes
- Height adjustable: 794 mm to 814 mm
- Material: CNS 18/10
Plastic
Steel
Galvanised
- Colour: Silver
Grey
- Production by means of: Vertical evaporator system
- Control unit: Touch
- Size: W 500 x D 600 x H 695 mm
- Weight: 52.47 kg

Stainl.steel polish.spray 500ml can



- Content / can: 500 ml
- Application: Remove heavy soiling such as grease residue first
Do not spray onto hot surfaces
- allow them to cool down first:
- Application: Before use, bring the can to room temperature and shake well
Spray sparingly onto the surfaces to be cleaned

Rub evenly over the entire surface
Polish with a dry cloth

Code-No. 173031
GTIN 4015613360195

Partial desalination system TKD 13400 FB



- Desalination type: Partial desalination
- Sampling tap: Yes
- Water connection: 3/4"
- Colour: Blue
- Connection capacity: 1 unit
- Output capacity: 13,400 litres / cartridge at 10° d (carbonate hardness)
- Material: Plastic
Glass-fibre reinforced
- Important information: -
- Deposit per cartridge: 290 €

Code-No. 109878
GTIN 4015613681597