



DOMINA PRO 700 - BASES

## NSA74

---

### OPEN STAND

#### TECHNICAL DATA:

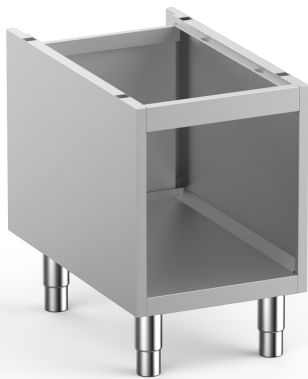
---

External dimensions - WxDxH (cm)	40x59,5x60
----------------------------------	------------

#### ADDITIONAL TECHNICAL DATA:

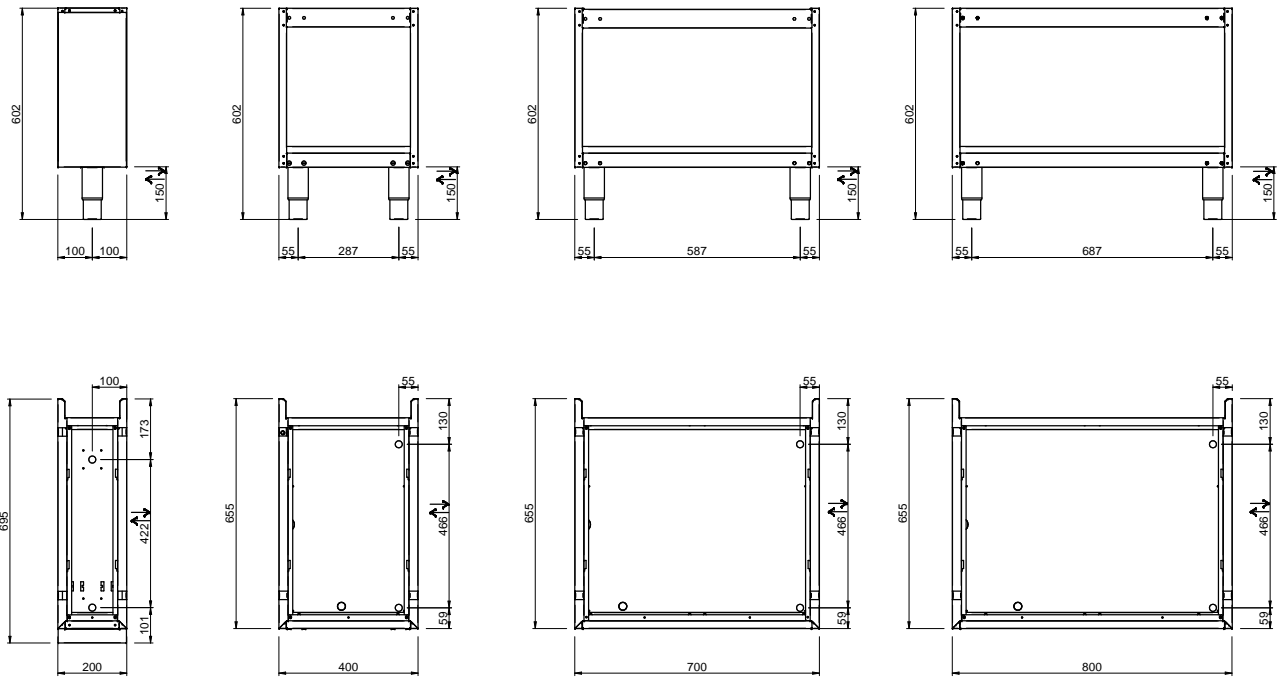
---

Weight (kg)	18
Volume (m3)	0,2



The DOMINA PRO 700 cupboard bases consists of different models dimensions.

The DOMINA PRO 700 range of ventilated refrigerated bases consists of models with 2/3 drawers or 2/3 doors. They are designed to carry cooking top units.



LEGENDA SIMBOLI / LEGEND



INGRESSO GAS / GAS INLET  
(EN 10226-1) Ø M 1/2"



ALIMENTAZIONE ELETTRICA /  
POWER SUPPLY



INGRESSO ACQUA /  
WATER INLET Ø M 1/2"



SCARICO ACQUA / OLII  
WATER / OILS DRAIN



ATTACCO EQUIPOTENZIALE /  
EQUIPOTENTIAL



REGOLAZIONE PIEDINI /  
FEET ADJUSTMENT (h 0/+50)  
/ TOP VERSION (h 0/+5)