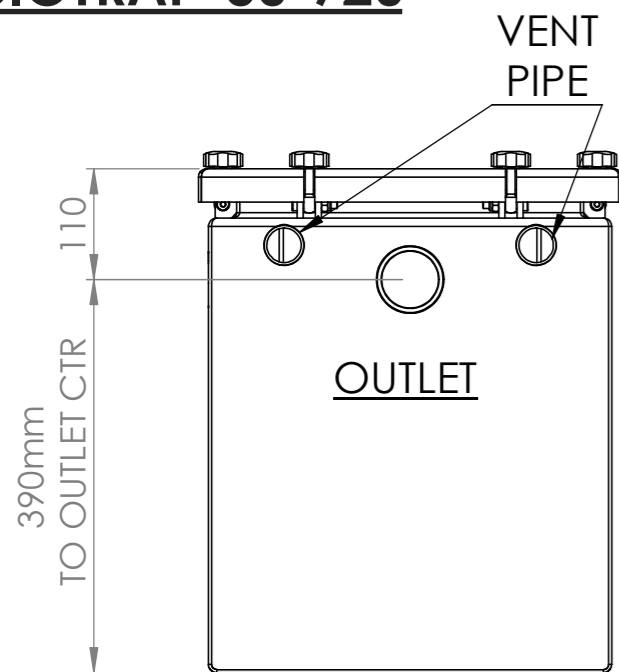
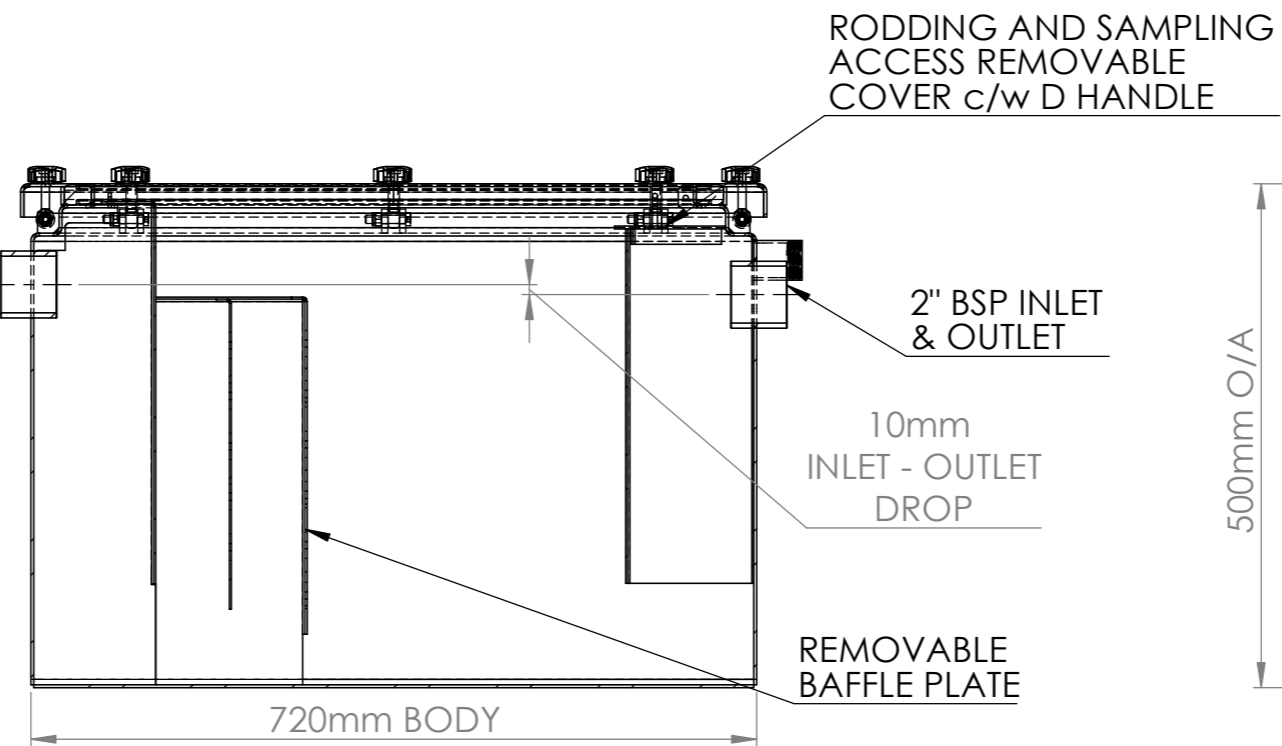


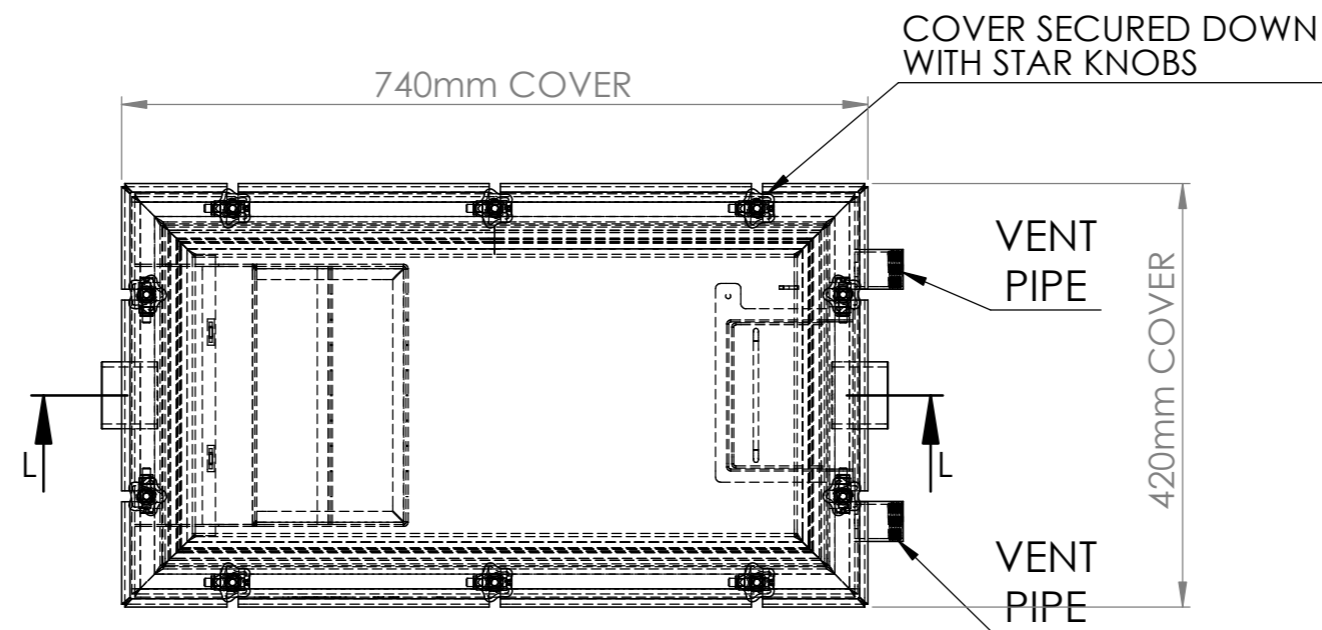
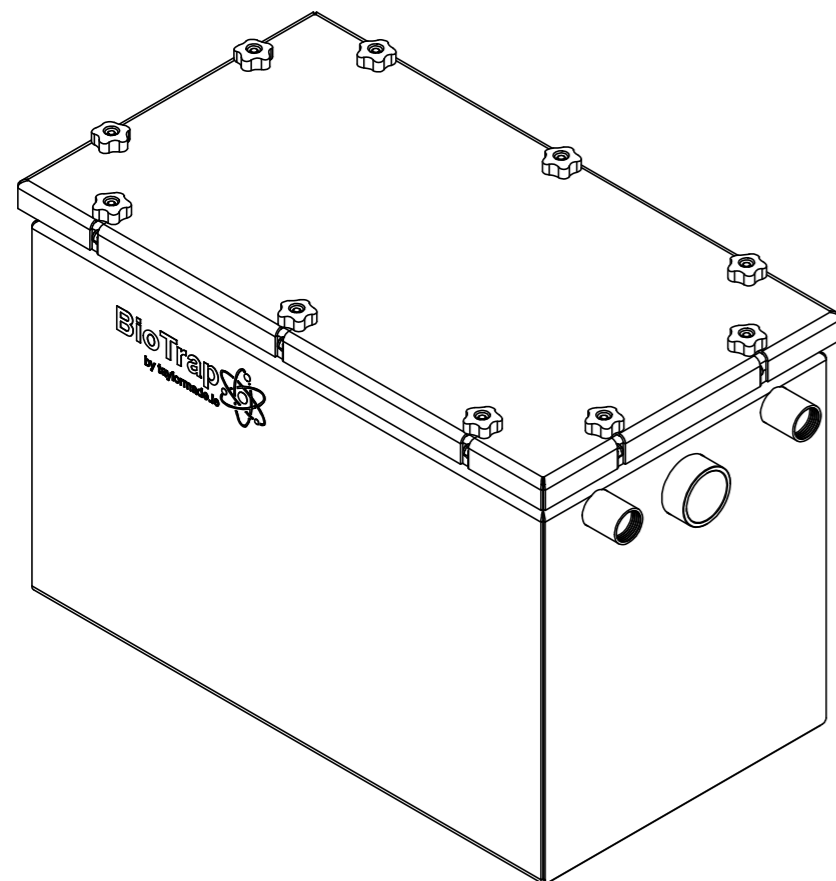
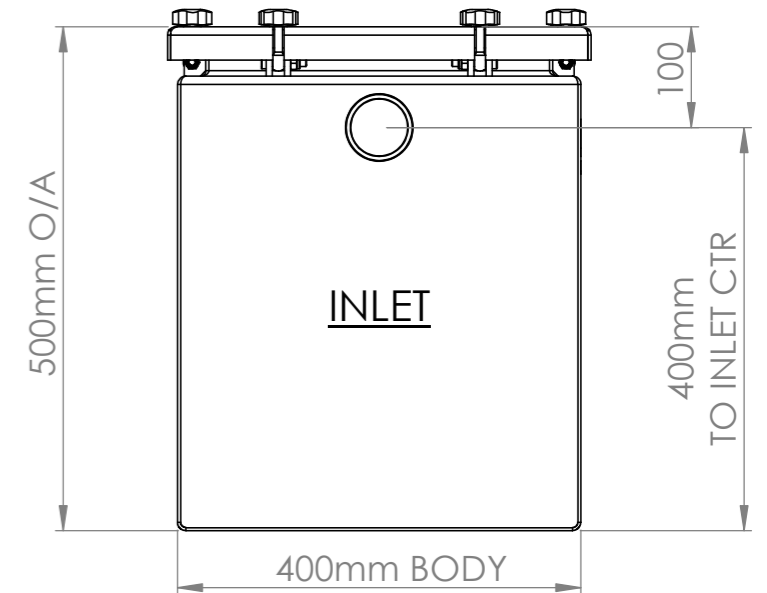
BIOTRAP-US-720



2" BSP INLET & OUTLET



SECTION L-L
SCALE 1 : 7.5



OVERALL LENGTH	720mm
OVERALL WIDTH	400mm
HEIGHT	500mm
OUTLET	2" BSP
INLET	2" BSP
FILLED VOLUME	100 LITRES
WEIGHT EMPTY	60 KG
FILLED WEIGHT	160 KG

UNLESS OTHERWISE SPECIFIED:
DIMENSIONS ARE IN MILLIMETERS

TOLERANCES:
LINEAR
0 - 10..... = ±0.25mm
10 - 200..... = ±0.50mm
200 - 1000..... = ±1.00mm
1000 - Upwards = ±2.00mm
ANGULAR..... = ±0.50°

DEBUR AND BREAK ALL SHARP EDGES

ALL DIMENSIONS TO OUTSIDE EDGES
UNLESS STATED OTHERWISE

First Angle Projection



PROJECT:

TAYLORMADE GREASETRAP RANGE

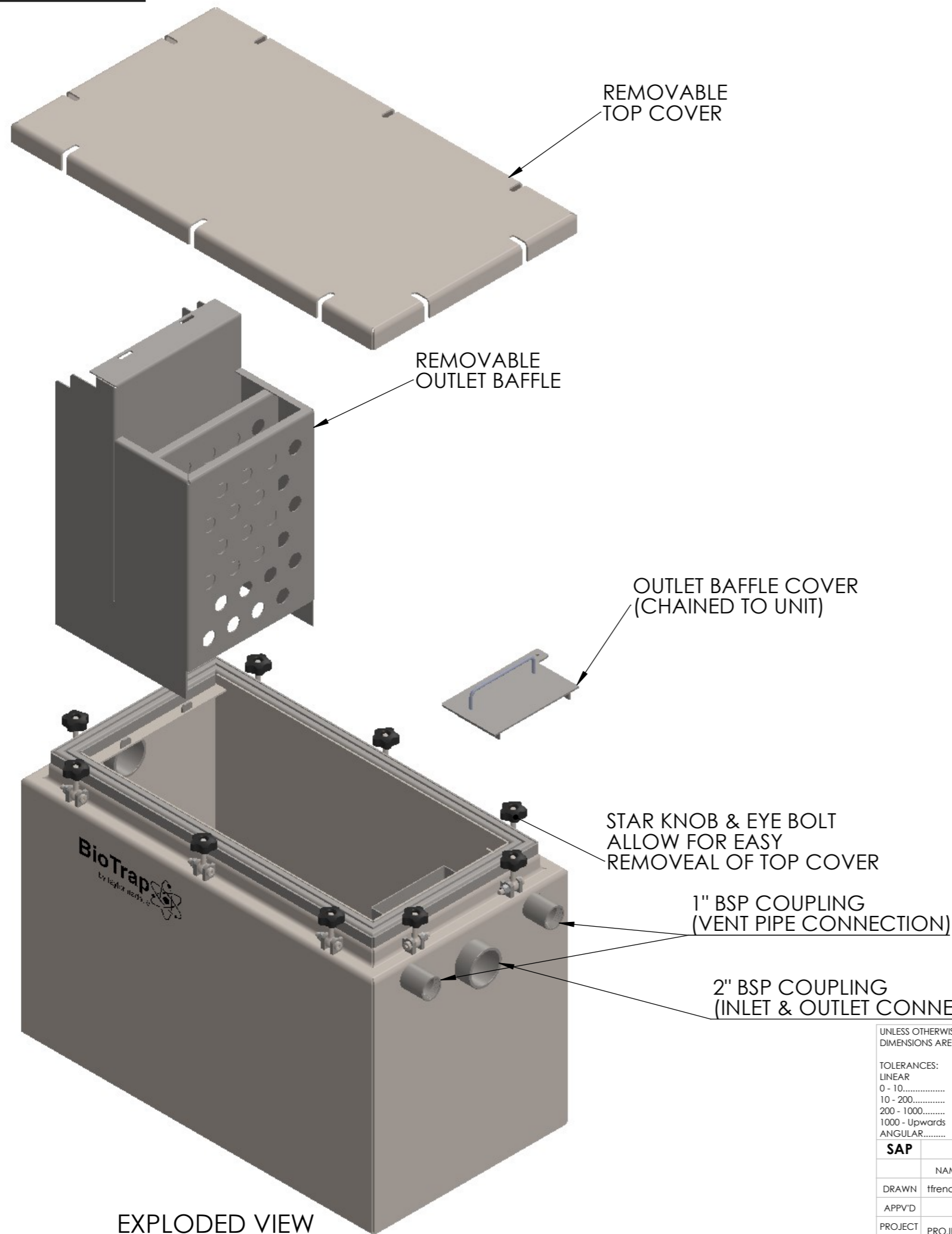
TITLE:

BIOTRAP-US-720

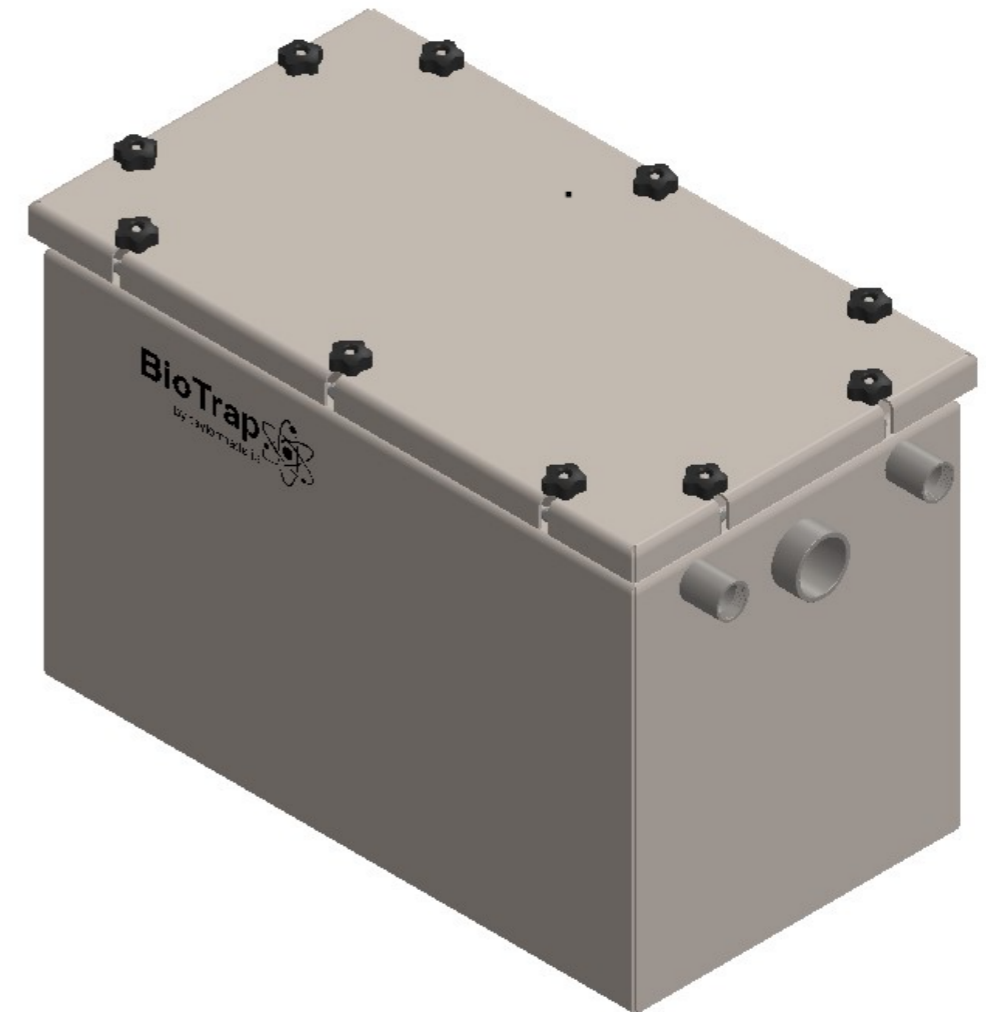
SAP	NAME	DATE	FINISH:
			SATIN
DRAWN	ffrench	12 Jul 2021	MATERIAL:
APPV'D			304SS
PROJECT NUMBER	PROJECT_02332	REVISION	SIZE / THICKNESS:
SALES ORDER			N/A
			WEIGHT: 69.01 kg

DWG NO.	KS175419
taylormade.ie GREASETRAP SOLUTIONS	
SCALE: 1:10	A3

BIOTRAP-US-720



EXPLODED VIEW

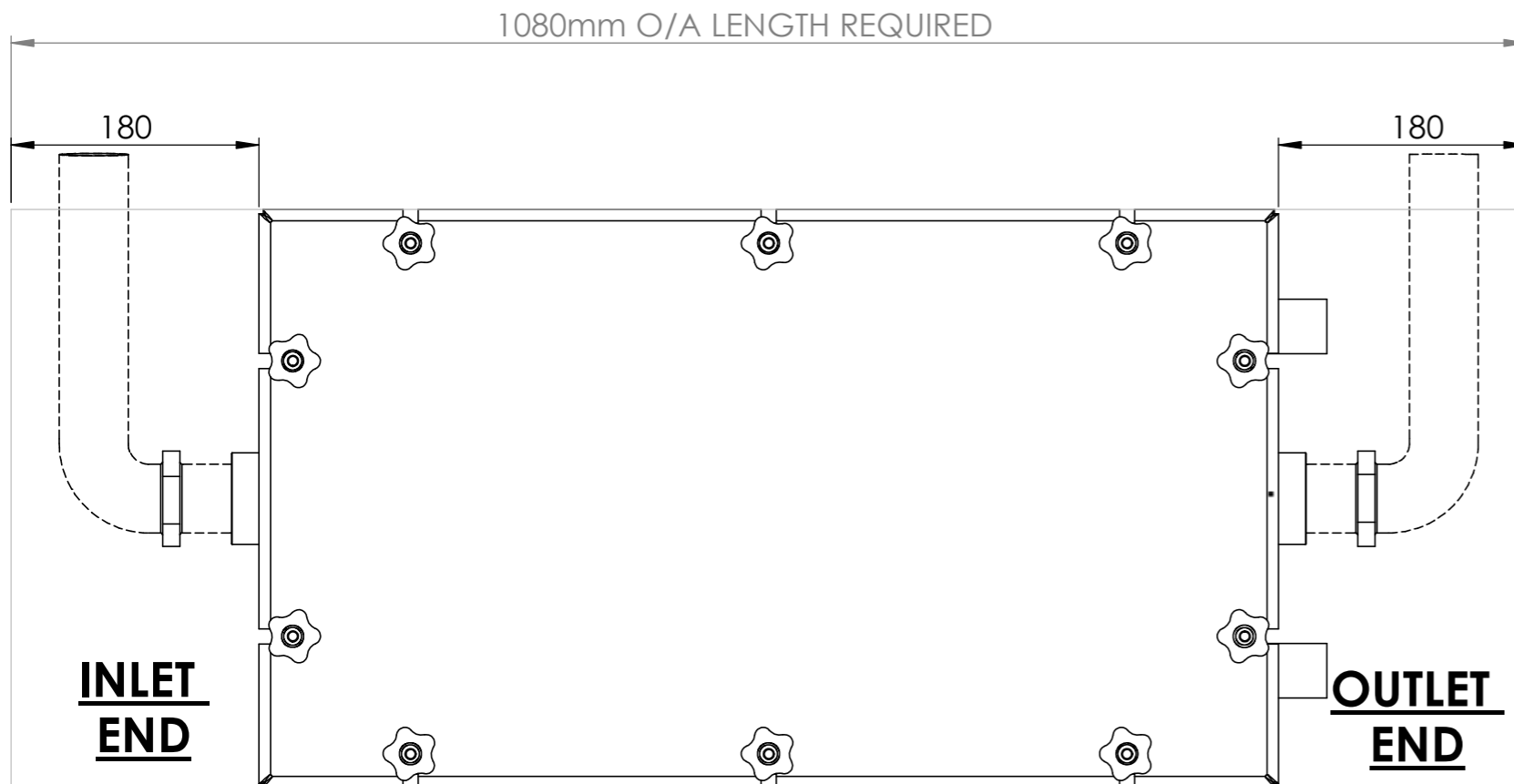


ISOMETRIC VIEW

UNLESS OTHERWISE SPECIFIED: DIMENSIONS ARE IN MILLIMETERS	DEBUR AND BREAK ALL SHARP EDGES	PROJECT: TAYLORMADE GREASETRAP RANGE
TOLERANCES: LINEAR 0 - 10..... = ±0.25mm 10 - 200..... = ±0.50mm 200 - 1000..... = ±1.00mm 1000 - Upwards..... = ±2.00mm ANGULAR..... = ±0.50°	ALL DIMENSIONS TO OUTSIDE EDGES UNLESS STATED OTHERWISE	TITLE: BIOTRAP-US-720
First Angle Projection		

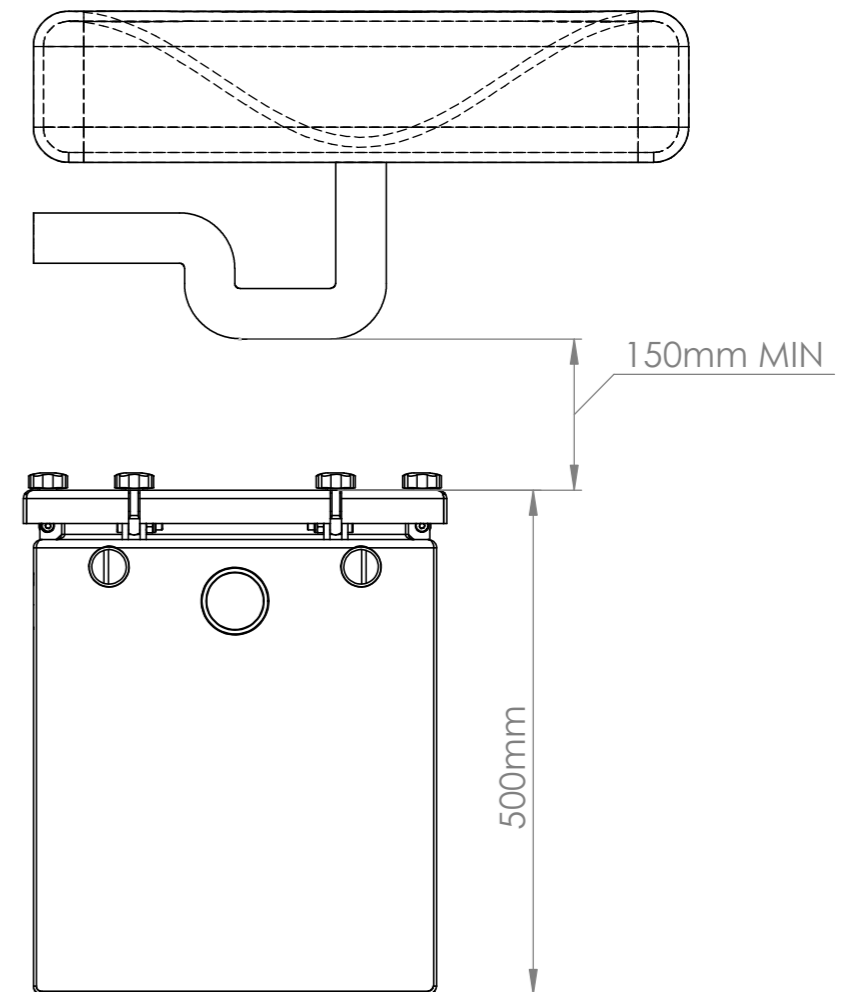
SAP	NAME	DATE	FINISH: SATIN	DWG NO.	KS175419
DRAWN	ffrench	12 Jul 2021	MATERIAL: 304SS		
APPVD			SIZE / THICKNESS: N/A		taylormade.ie GREASETRAP SOLUTIONS
PROJECT NUMBER	PROJECT_02332	REVISION	WEIGHT: 69.01 kg		
SALES ORDER				SCALE:1:10	A3

REQUIRED FOOTPRINT FOR THIS MODEL



180mm REQUIRED AT BOTH ENDS OF GREASETRAP FOR PIPEWORK AS SHOWN

REQUIRED HEADROOM FOR THIS MODEL



150mm REQUIRED AT TOP OF GREASETRAP TO ALLOW FOR LID REMOVAL & CLEANING AS SHOWN

UNLESS OTHERWISE SPECIFIED: DIMENSIONS ARE IN MILLIMETERS		DEBUR AND BREAK ALL SHARP EDGES	PROJECT: TAYLORMADE GREASETRAP RANGE
TOLERANCES: LINEAR 0 - 10..... = ±0.25mm 10 - 200..... = ±0.50mm 200 - 1000..... = ±1.00mm 1000 - Upwards = ±2.00mm ANGULAR..... = ±0.50°		ALL DIMENSIONS TO OUTSIDE EDGES UNLESS STATED OTHERWISE	TITLE: BIOTRAP-US-720
First Angle Projection			

SAP	NAME	DATE	FINISH: SATIN	DWG NO. KS175419
DRAWN	ffrench	12 Jul 2021	MATERIAL: 304SS	 GREASETRAP SOLUTIONS
APPVD			SIZE / THICKNESS: N/A	
PROJECT NUMBER	PROJECT_02332	REVISION	WEIGHT: 69.01 kg	A3
SALES ORDER			SCALE: 1:10	