



▶ Designed for all buffet system sets



▶ Cut-out:

✓ GN 1/1

▶ Simple connecting system



The basis of all buffet system sets in wood design with food-safe clear varnish and a cut-out in GN 1/1 format.

- Colour: Natural beech
- Module type: Base frame
- Model: Cut-out: 1/1 GN
- Material: Wood
Painted (food-safe)
- Important information: -
- Size: W 580 x D 405 x H 70 mm
- Weight: 1.7 kg

Base frame buffet system

Add on Products

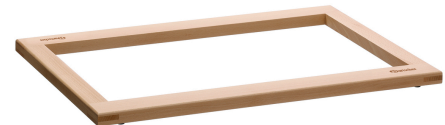
Finishing frame buffet system



- Colour: Natural beech
- Model: Cut-out: 1/1 GN
- Material: Wood
Painted (food-safe)
- Important information: -
- Module type: Finishing frame
Standard
- Size: W 580 x D 405 x H 24 mm
- Weight: 1.2 kg

Code-No. 500740
GTIN 4015613747033

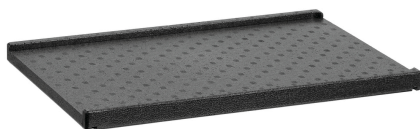
Finishing frame buffet system CD



- Colour: Natural beech
- Material: Wood
Painted (food-safe)
- Module type: Finishing frame
Buffet system set CD3-1/3
- Model: Cut-out: 1/1 GN
- Important information: -
- Size: W 580 x D 405 x H 24 mm
- Weight: 1.1 kg

Code-No. 500741
GTIN 4015613747040

Thermal plate buffet system



- Model: Stopper edge, front and back
- Module type: Thermal plate
- Material: Polystyrene
- Important information: -
- Size: W 532 x D 358 x H 30 mm
- Weight: 0.19 kg

Code-No. 500742
GTIN 4015613747057

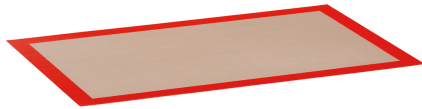
Ice pack buffet system



- Material: Polyethylene
- Important information: -
- Model: Full cooling gel filling without cavities
With carrying handle and insert edges
Dishwasher-suitable up to 85 °C (over 2 hours)
- Module type: Cold pack
- Size: W 530 x D 323 x H 31 mm
- Weight: 3.89 kg

Code-No. 500743
GTIN 4015613747064

Silicone film buffet system



- Model: Temperature resistant from -40 °C to 300 °C
Non-stick
- Module type: Silicone film
- Material: Fibreglass fabric
Silicone-coated
- Important information: -
- Size: W 520 x D 314 x H 2 mm
- Weight: 0.12 kg

Code-No. 500744
GTIN 4015613747071