



- ▶ Designed for
  - ✓ 3 x 1/1 GN
  - ✓ Depth GN container max: 150 mm

- ▶ Prepared for attachment of the matching tray chute on both sides

“Hot food” perfectly presented.  
The buffet cart is optimally equipped with integrated lighting, sneeze guard with shelf function and wheels for convenient transport.

- Power load: 2 kW | 230 V | 50/60 Hz
- Number of tanks: 1
- Temperature range: 30 °C to 90 °C
- Basin size, GN format: 3 x 1/1 GN
- Control lamp: ON/OFF
- Drain cock: Yes
- Germ guard: Yes
- Lighting: On the germ guard
- Delivery state: Building kit (simple assembly)
- Swivel casters: 4 swivel casters, 2 with brake
- Properties: Work surface made of Granit Rosa Porrino  
Stainless steel sink  
GN containers
- Not included in delivery: GN containers
- Depth GN container max.: 150 mm
- Material: Wood
- Important information: -
- Colour: Teak
- Size: W 1,200 x D 880 x H 1,370 mm
- Weight: 112 kg

### GN-container, 1/1GN,D150, Basic Line

CNS



- Content: 21 litre(s)
- Stackable: Yes
- Design: No perforation
- Reinforced edge: No
- Surface: Silk matt
- Depth container: 150 mm
- Gastronorm: 1/1 GN
- Norm: EN 631
- Series: Basic Line
- Material: Chrome-nickel steel
- Important information: -

Code-No. 711150  
GTIN 4015613695600

### GN-container, 1/2GN,D150, Basic Line

CNS



- Content: 9,5 litre(s)
- Stackable: Yes
- Design: No perforation
- Reinforced edge: No
- Surface: Silk matt
- Depth container: 150 mm
- Gastronorm: 1/2 GN
- Norm: EN 631
- Series: Basic Line
- Material: Chrome-nickel steel
- Important information: -

Code-No. 712150  
GTIN 4015613695723

### GN-container, 1/3GN,D150, Basic Line

CNS



- Content: 5,75 litre(s)
- Stackable: Yes
- Design: No perforation
- Reinforced edge: No
- Surface: Silk matt
- Depth container: 150 mm
- Gastronorm: 1/3 GN
- Norm: EN 631
- Series: Basic Line
- Material: Chrome-nickel steel
- Size: W 325 x D 176 x H 150 mm

Code-No. 713150  
GTIN 4015613695792

### GN container, 1/1, D150

CNS  
18/10



- Content: 21 litre(s)
- Stackable: Yes
- Design: No perforation
- Reinforced edge: No
- Properties: -
- Surface: High-gloss
- Depth container: 150 mm
- Gastronorm: 1/1 GN
- Norm: EN 631
- Series: Top Line
- Important information: -

Code-No. A120610  
GTIN 4016098101204

### GN container, 1/2, 150mm, 9,5 L

CNS  
18/10



- Content: 9,5 litre(s)
- Stackable: Yes
- Design: No perforation
- Reinforced edge: No
- Properties: -
- Surface: High-gloss
- Depth container: 150 mm
- Gastronorm: 1/2 GN
- Norm: EN 631
- Series: Top Line
- Important information: -

Code-No. A120620  
GTIN 4015613278988

### GN container, 2/4, D150

CNS  
18/10



- Content: 9 litre(s)
- Stackable: Yes
- Design: No perforation
- Reinforced edge: No
- Properties: -
- Surface: High-gloss
- Depth container: 150 mm
- Gastronorm: 2/4 GN
- Norm: EN 631
- Series: Top Line
- Important information: -

Code-No. A128150  
GTIN 4015613271156

### GN container, 1/3, D150

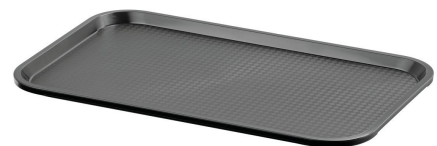
CNS  
18/10



- Content: 5,75 litre(s)
- Stackable: Yes
- Design: No perforation
- Reinforced edge: No
- Properties: -
- Surface: High-gloss
- Depth container: 150 mm
- Gastronorm: 1/3 GN
- Norm: EN 631
- Series: Top Line
- Important information: -

Code-No. A123150  
GTIN 4016098101266

### Tray GN110-S



- Colour: Black
- Important information: -
- Dishwasher safe: Yes
- Stackable: Yes
- Dimensions surface: W 495 x D 290 mm
- Worktop surface: Structured
- Norm format: 1/1 GN
- Material: Plastic (polypropylene)
- Properties: -
- Size: W 530 x D 325 x H 20 mm
- Weight: 0.58 kg

Code-No. 701053  
GTIN 4015613695303

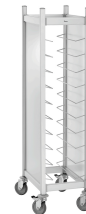
### Tray KN45350-HG



- Colour: Light grey
- Worktop surface: Structured
- Stackable: Yes
- Dishwasher safe: Yes
- Properties: -
- Material: Plastic (polypropylene)
- Important information: -
- Norm format: Canteen norm
- Dimensions surface: W 415 x D 315 mm
- Size: W 450 x D 355 x H 20 mm
- Weight: 0.39 kg

Code-No. 701054  
GTIN 4015613695310

### Tray trolley AT1000-GN



- Can be loaded from both sides: Yes
- Designed for: Fast-Food trays  
Serving trays
- Worktop surface: No
- Properties: -
- Including: -
- Model: Tray holders
- Application area: Clearing
- Total load-bearing capacity, max.: 60 kg
- With handle(s): No
- Swivel casters: 4 swivel casters, 2 with brake

Code-No. 300149  
GTIN 4015613709185