



▶ Buffet cart for cold food



▶ Designed for

- ✓ 4 x 1/1 GN
- ✓ Max. depth of GN containers: 200 mm



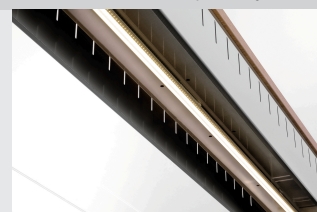
▶ With tray slide

- ✓ Hinged
- ✓ Dimensions: W 1,495 x D 250 mm



▶ Lighting:

- ✓ LED
- ✓ Can be controlled separately



The mobile buffet solution with a modern wooden design – this buffet cart has germ protection and LED lighting. It is designed for four 1/1 GN containers and can be relied on to keep buffet dishes chilled.

- | | | | |
|-----------------------------|------------------------------------|-----------|--------------------------------|
| • Cooling: | Static | • Size: | W 1,245 x D 1,500 x H 1,425 mm |
| • Coolant: | R290 / 0,070 kg | • Weight: | 165 kg |
| • Climate class: | 3 | | |
| • Power load: | 0,344 kW 230 V 50 Hz | | |
| • Number of tanks: | 1 | | |
| • Temperature range: | 2 °C to 4 °C | | |
| • Tray slide: | yes | | |
| | Folding | | |
| | Dimensions: B 1,495 x T 250 mm | | |
| • Basin size, GN format: | 4 x 1/1 GN | | |
| • Control lamp: | ON/OFF | | |
| • Drain cock: | Yes | | |
| • Connection cable type: | Spiral cable | | |
| • Length cable: | 1,8 m | | |
| • Germ guard: | Yes | | |
| • Lighting: | LED | | |
| | Can be switched separately | | |
| • Delivery state: | Permanently mounted | | |
| • Swivel casters: | 5 swivel casters, 2 with brake | | |
| • Properties: | Stainless steel sink | | |
| • Colour: | Elm | | |
| • Not included in delivery: | GN containers | | |
| • Depth GN container max.: | 200 mm | | |
| • Including: | 4 bars: Length 528 mm, width 30 mm | | |
| • Material: | Laminated wood | | |
| | Stainless steel | | |
| | Plastic | | |
| • Important information: | - | | |



GN-container, 1/1GN,D200, Basic Line

CNS



- Content: 28 litre(s)
- Stackable: Yes
- Design: No perforation
- Reinforced edge: No
- Surface: Silk matt
- Depth container: 200 mm
- Gastronorm: 1/1 GN
- Norm: EN 631
- Series: Basic Line
- Material: Chrome-nickel steel
- Properties: -

Code-No. 711200
GTIN 4015613695617

GN-container, 1/2GN,D200, Basic Line

CNS



- Content: 12,5 litre(s)
- Stackable: Yes
- Design: No perforation
- Reinforced edge: No
- Surface: Silk matt
- Depth container: 200 mm
- Gastronorm: 1/2 GN
- Norm: EN 631
- Series: Basic Line
- Material: Chrome-nickel steel
- Size: W 325 x D 265 x H 200 mm

Code-No. 712200
GTIN 4015613695730

GN-container, 1/3GN,D200, Basic Line

CNS



- Content: 7,8 litre(s)
- Stackable: Yes
- Design: No perforation
- Reinforced edge: No
- Surface: Silk matt
- Depth container: 200 mm
- Gastronorm: 1/3 GN
- Norm: EN 631
- Series: Basic Line
- Material: Chrome-nickel steel
- Size: W 325 x D 176 x H 200 mm

Code-No. 713200
GTIN 4015613695808

GN container, 1/1, D200

CNS
18/10



- Content: 28 litre(s)
- Stackable: Yes
- Design: No perforation
- Reinforced edge: No
- Properties: -
- Surface: High-gloss
- Depth container: 200 mm
- Gastronorm: 1/1 GN
- Norm: EN 631
- Series: Top Line
- Important information: -

Code-No. A121200
GTIN 4015613271071

Buffet trolley K4110-200U

Add on Products

GN container, 1/2, D200

CNS
18/10



- Content: 12,5 litre(s)
- Stackable: Yes
- Design: No perforation
- Reinforced edge: No
- Properties: -
- Surface: High-gloss
- Depth container: 200 mm
- Gastronorm: 1/2 GN
- Norm: EN 631
- Series: Top Line
- Important information: -

Code-No. A122200
GTIN 4015613271101

GN container, 1/3, D200

CNS
18/10



- Content: 7,8 litre(s)
- Stackable: Yes
- Design: No perforation
- Reinforced edge: No
- Properties: -
- Surface: High-gloss
- Depth container: 200 mm
- Gastronorm: 1/3 GN
- Norm: EN 631
- Series: Top Line
- Important information: -

Code-No. A123200
GTIN 4015613271279

GN container, 1/4, D200

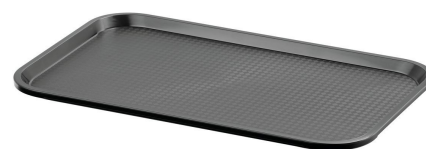
CNS
18/10



- Content: 5,5 litre(s)
- Stackable: Yes
- Design: No perforation
- Reinforced edge: No
- Properties: -
- Surface: High-gloss
- Depth container: 200 mm
- Gastronorm: 1/4 GN
- Norm: EN 631
- Series: Top Line
- Important information: -

Code-No. A124200
GTIN 4015613271187

Tray GN110-S



- Colour: Black
- Important information: -
- Dishwasher safe: Yes
- Stackable: Yes
- Dimensions surface: W 495 x D 290 mm
- Worktop surface: Structured
- Norm format: 1/1 GN
- Material: Plastic (polypropylene)
- Properties: -
- Size: W 530 x D 325 x H 20 mm
- Weight: 0.58 kg

Code-No. 701053
GTIN 4015613695303

Tray KN45350-HG



- Colour: Light grey
- Worktop surface: Structured
- Stackable: Yes
- Dishwasher safe: Yes
- Properties: -
- Material: Plastic (polypropylene)
- Important information: -
- Norm format: Canteen norm
- Dimensions surface: W 415 x D 315 mm
- Size: W 450 x D 355 x H 20 mm
- Weight: 0.39 kg

Code-No. 701054
GTIN 4015613695310

Tray trolley AT1000-GN



- Can be loaded from both sides: Yes
- Designed for: Fast-Food trays
Serving trays
- Worktop surface: No
- Properties: -
- Including: -
- Model: Tray holders
- Application area: Clearing
- Total load-bearing capacity, max.: 60 kg
- With handle(s): No
- Swivel casters: 4 swivel casters, 2 with brake

Code-No. 300149
GTIN 4015613709185