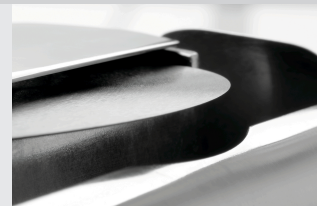




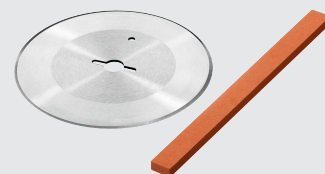
- ▶ Stainless steel blade
- ✓ Diameter: 10 cm
- ✓ With blade protection



- ▶ Simple cutting thickness adjustment
- ✓ Cutting thickness: 0 - 6 mm



- ▶ Includes
- ✓ 1 spare blade
- ✓ 1 sharpening stone



The cutting thickness of the electric doner kebab knife can be easily adjusted from 0 to 6 millimetres. With the smooth stainless steel blade, the meat can be cut flexibly and precisely into pieces.

- Model: Electronic
- Design knife: Stainless steel
Smooth
- Diameter knife: 100 mm
- Adjustable cutting thickness: Yes
- Cutting thickness: 0 - 6 mm
- Blade guard: Yes
- Rpm max.: 2560 r. / min.
- Overload protection: Yes
- Protection class: 2
- Control unit: Electronic
- ON/OFF switch: Yes
- Connection cable model: Cable length: 2,8 m
- Including: 1 spare blade
1 sharpening stone
- Power load: 0,08 kW | 230 V | 50 Hz
- Material: Stainless steel
Plastic
- Important information: -
- Size: W 130 x D 190 x H 256 mm
- Weight: 1.4 kg